

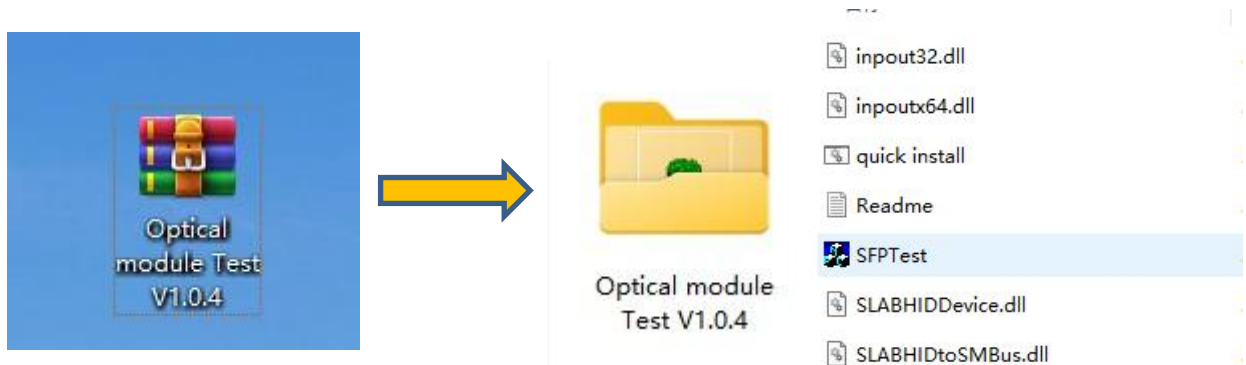
Optical Module Test V1.0.4 User Guide

一、 软件安装 Software installation

把软件包解压，并把驱动文件和 SFPTest 程序放进同一文件夹，如下图操作

Decompress the software package, Put the driver file and SFPTest program into the same folder as shown in the following figure.

安装前请仔细阅读“Read me” Please Read "Read me" carefully before installation.



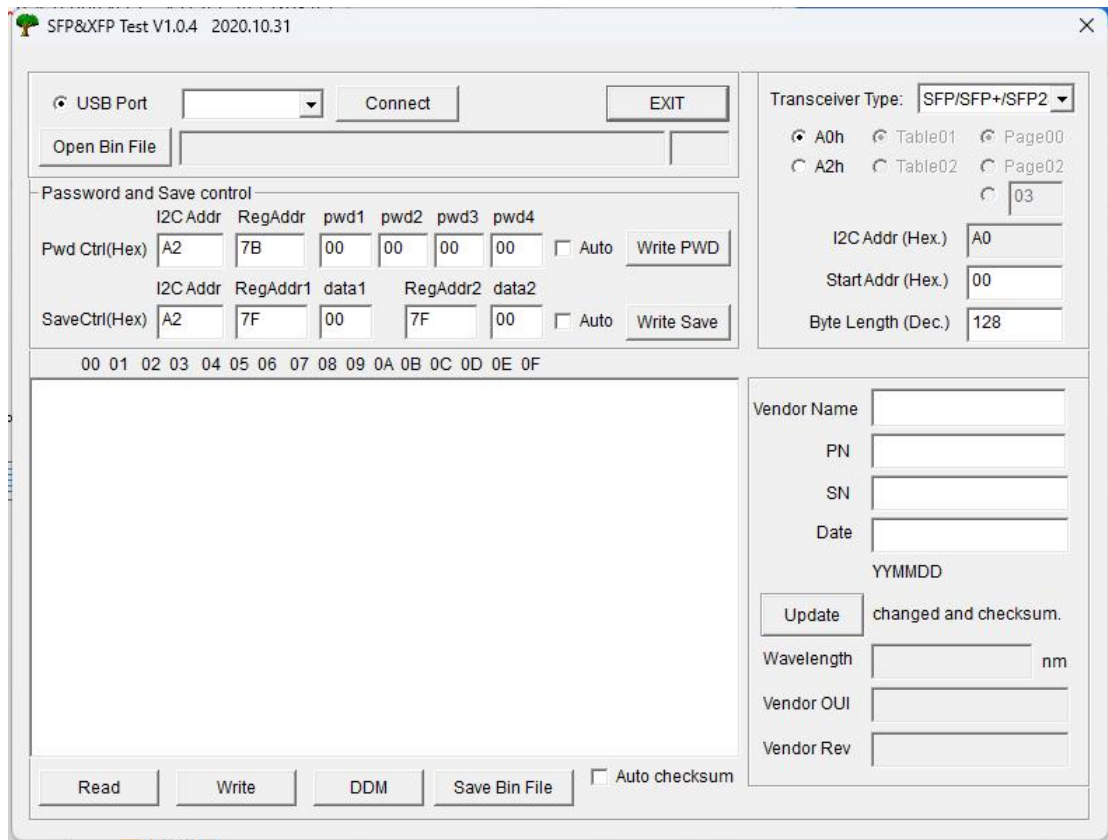
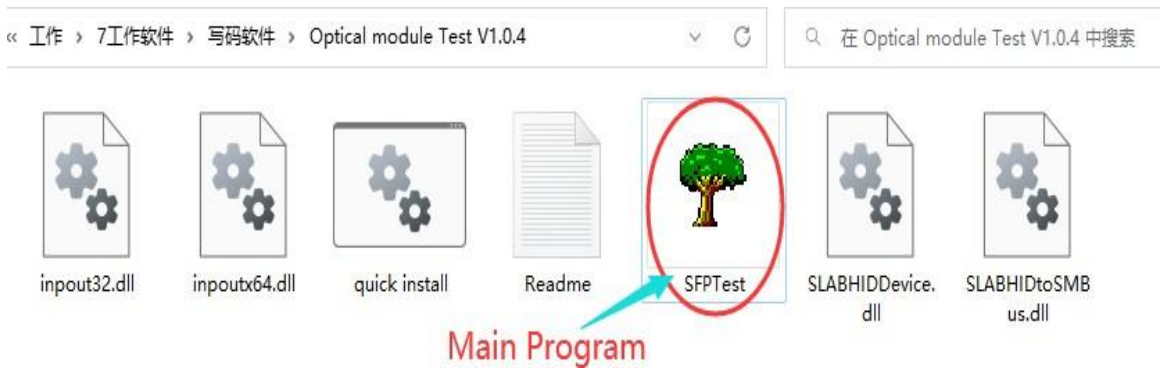
二、读码 Code reading

1、用 USB 线把测试板与电脑连接好；

Use USB cable to connect the test board to the computer;

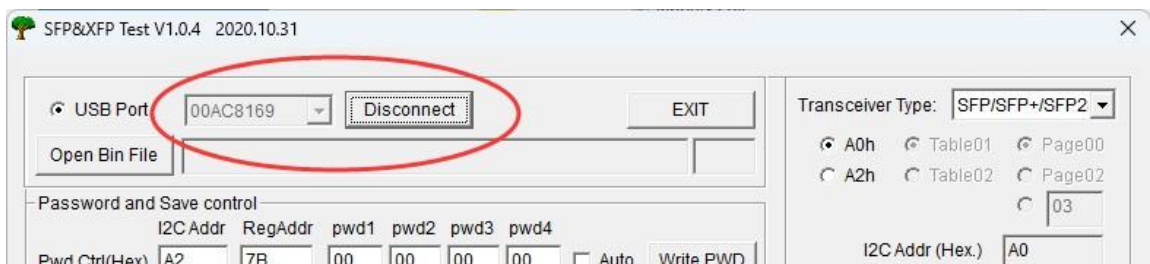
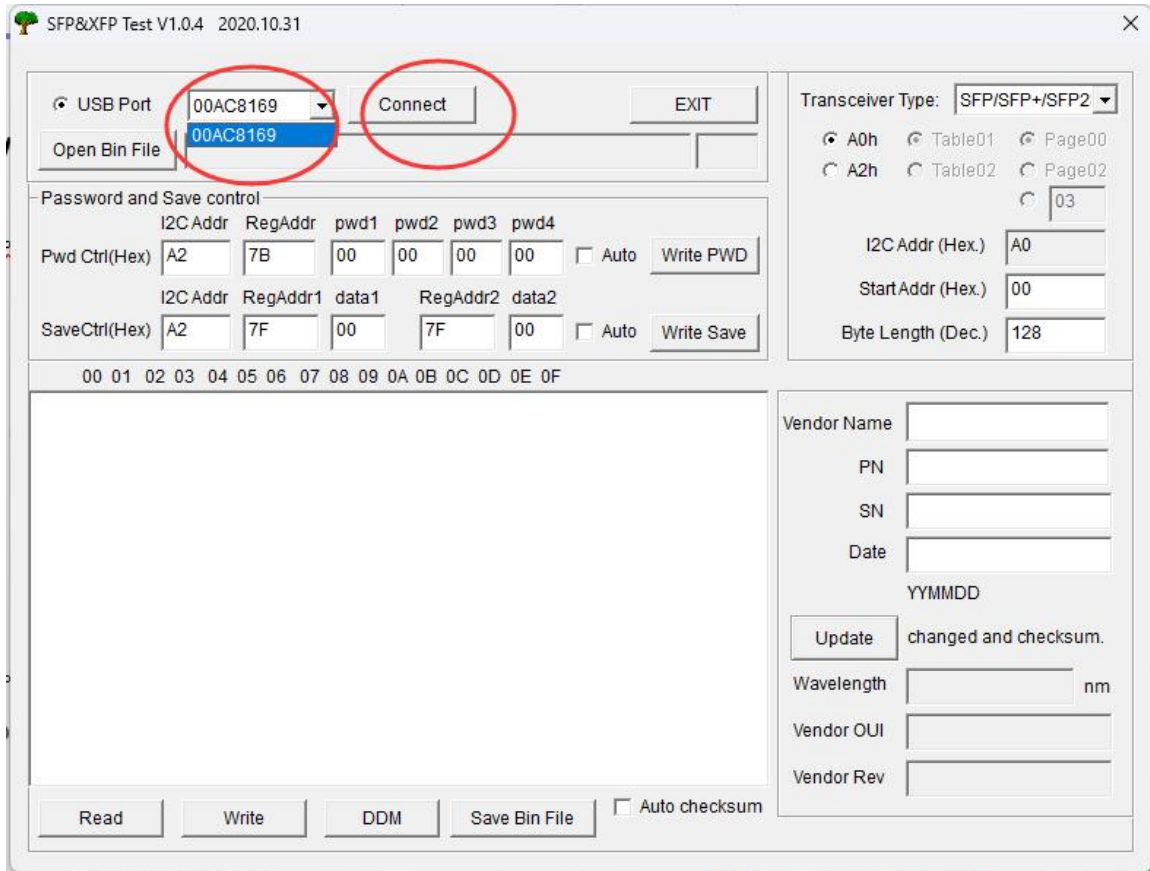
2、点击打开软件主程序，进入到 SFP&XFP Test V1.0.4 主页面；

Click to open the main program of the software and enter the main page of SFP&XFP Test V1.0.4

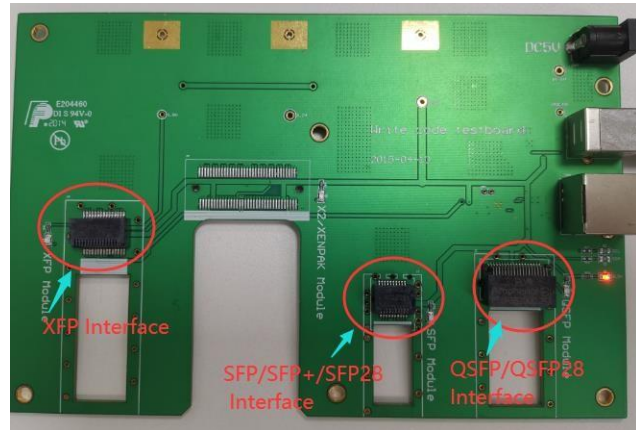


3、如下图点击 USB Port 后面的选项框选择 00AC8169 选项，再单击后面 Connect 按钮，选项框变成灰色则连接成功。

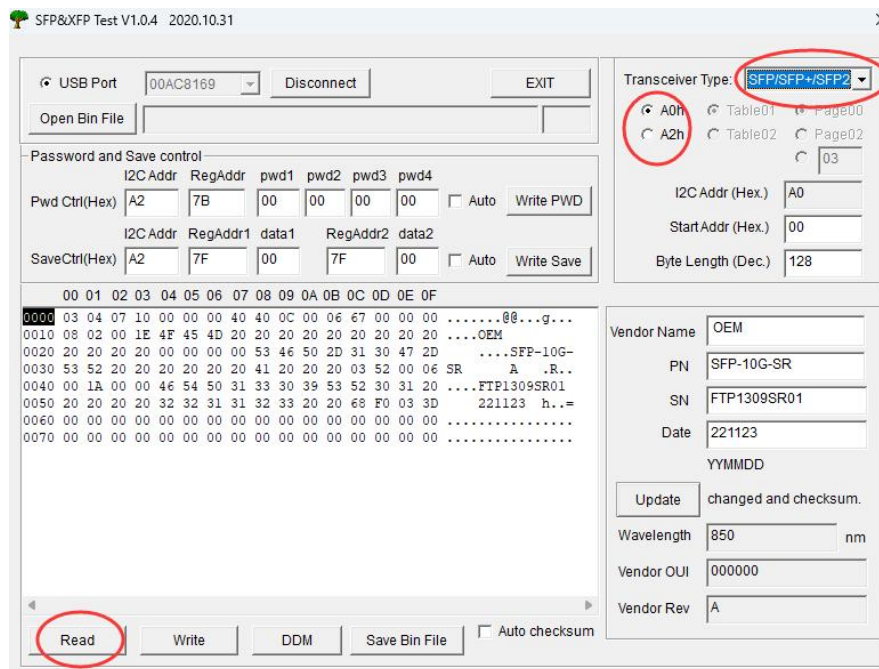
Click the option box behind the USB Port and **select 00AC8169**. Then click the **Connect** button. If the option box turns gray, the connection succeeds.



4、把需要读取的模块插入到测试板相应的座子位置（座子接口类型选择请参考图下）；
Insert the module to be read into the corresponding socket of the test board (please refer to the figure below for the selection of socket interface type);

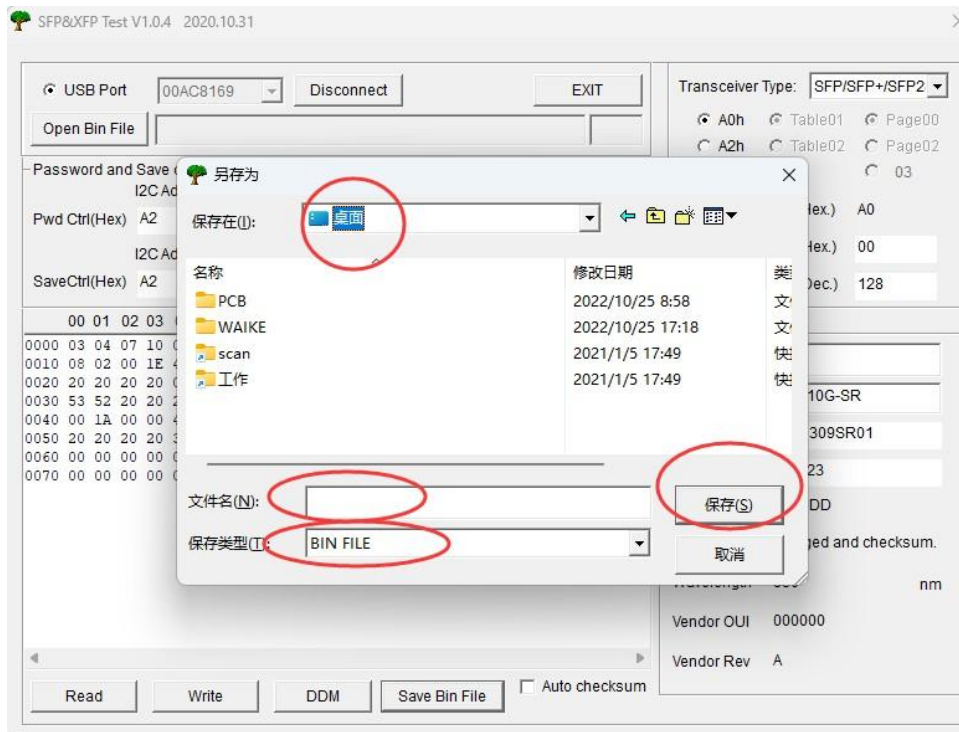
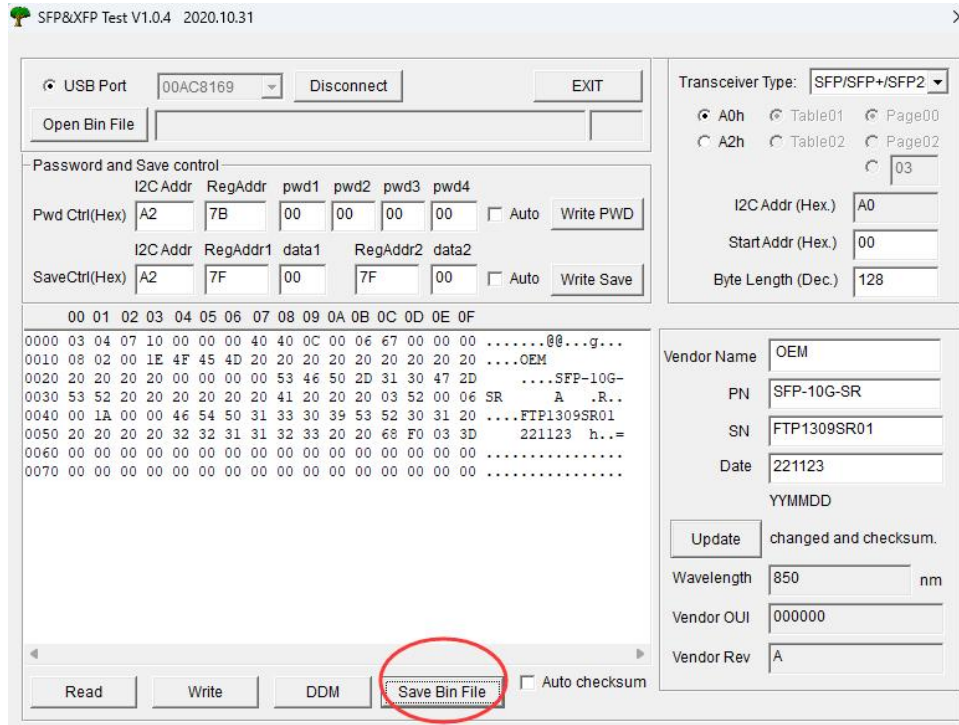


5、选择需要读码模块的类型，例如需要读取 SFP+模块，即可选择 SFP 选项，然后选择 A0h，接着点击软件主页面左下方的 read 选项来读取 A0 码信息，选接着择A2h 选项，再点击左下方的read 来读取模块 A2 信息。Select the type of code module to be read. For example, if you want to read SFP+ module, select SFP option, then select A0h, then click Read at the lower left of the software homepage to read A0 code information, select A2h option, then click Read at the lower left to read module A2 information.



三、存码 Save code

- 待SFP&XFP Test V1.0.4 软件读取到模块A0h 信息以后，单击软件主页面下方中部的 Save Bin File 按钮，接着在文件名里面命名 A0，并选择合适的文件夹保存；
After SFP&XFP Test V1.0 reads module A0h information, click **Save Bin File** in the lower part of the main page of the software, name A0 in the file name, and select a proper file to save the information.



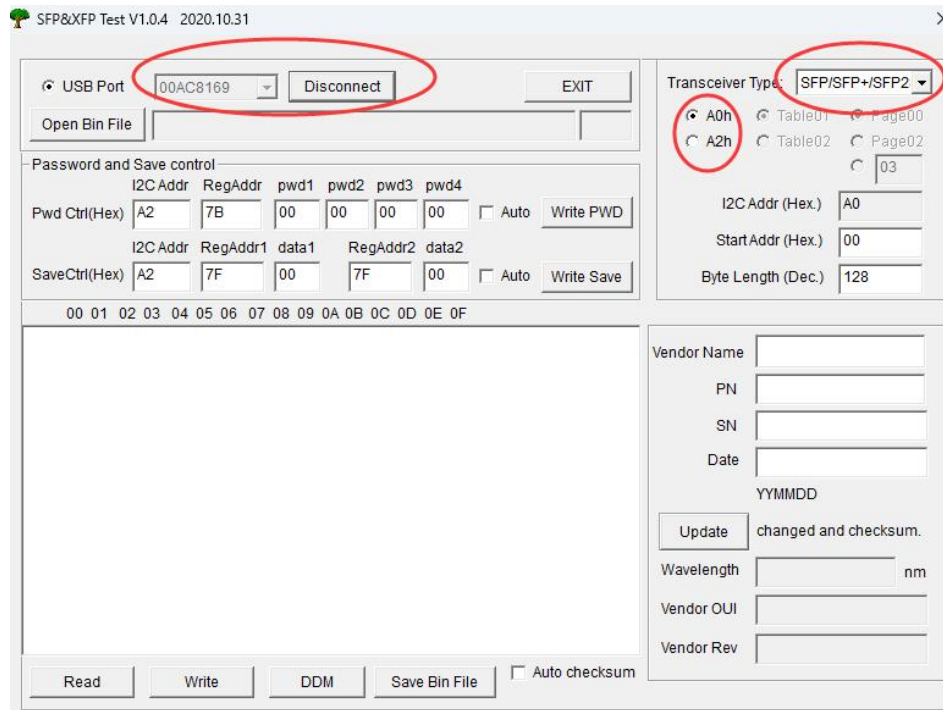
2. 保存 A2 信息，读取到 A2 信息后，单击 Save Bin File 按钮，重复上一步操作，并命名 A2 保存到与 A0 同一文件夹内。 Save A2 information. After reading A2 information, click **Save Bin File**, name A2 and save it to the same file as A0

注意: Attention

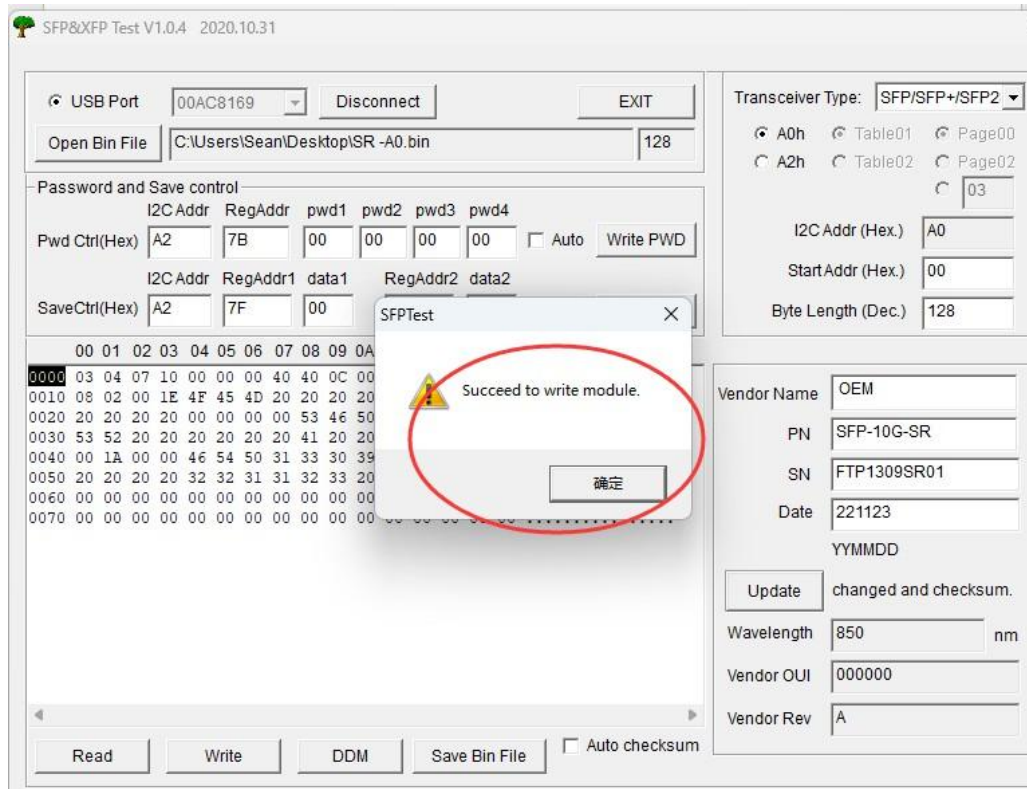
A0 和 A2 要区分开来。 A0 and A2 should be distinguished.

四、写码 Coding

- 1、点击打开软件主程序-单击选择 0053BE14 选项-单击 Connect 按钮-选择相应模块类型-选择需要写的 A0/A2; Click Open the main program of the software - Click Select **0053BE14** option - Click **Connect** button - Select the corresponding module type - select A0/A2 to be written;



- 2、把需要写的模块插入到测试板相应类型的座子内; Insert the module to be written into the socket of the corresponding type of test board;
- 3、单击 Open Bin File 按钮，选择需要写入的码文件; Click the **Open Bin File** button and select the code file you want to write to



五、其他说明 Other Notes

如果模块有加密, 请在PWD Ctrl 位置输入正确密码, 勾选Auto,其他操作和上面一样。If

the module has encryption, please enter the correct password in **PWD Ctrl** position and check **Auto**. The other operations are the same as above

注意: 密码是 16 进制。Attention: The password is in hexadecimal

